



Supporting Pupils with Medical Conditions Policy

'Being the BEST we can be in all that we do'

Date of Policy Issue:	January 2023
Review Date:	January 2024
Name of Responsible Manager/Headteacher:	Jamie Dodson
Signature of Responsible Manager/Headteacher	<i>Jamie Dodson</i>
Signature of Chair of Governors	<i>Lorraine Suchanek</i>
Date:	January 2023
Issue number	2.6
Changes:	<ul style="list-style-type: none"> • Policy and Review dates. • Addition to detail regarding sanitary products & parental contact

Introduction

Section 100 of The Children and Families Act 2014 places a duty on the governing body of this school to make arrangements for supporting children with medical conditions. The Department of Education have produced statutory guidance 'Supporting Pupils with Medical Conditions' and we will have regard to this guidance when meeting this requirement.

We will endeavour to ensure that children with medical conditions are properly supported so that they have full access to education, including school trips and physical education. The aim is to ensure that all children with medical conditions, in terms of both their physical and mental health, are properly supported in school so that they can play a full and active role in school life, remain healthy and achieve their academic potential.

It is our policy to ensure that all medical information will be treated confidentially by the Headteacher and staff. All administration of medicines is arranged and managed in accordance with the Supporting Pupils with Medical Needs document. All staff have a duty of care to follow and co-operate with the requirements of this policy.

Where children have a disability, the requirement of the Equality Act 2010 will apply.

Where children have an identified special need, the SEN Code of Practice will also apply.

We recognise that medical conditions may impact social and emotional development as well as having educational implications.

Key Roles & Responsibilities

Statutory Requirement: The governing body should ensure that the school's policy clearly identifies the roles and responsibilities of all those involved in the arrangements they make to support children at school with medical conditions.

The Governing Body is responsible for:

Making arrangements to support pupils with medical conditions in school, including ensuring that a policy for supporting pupils with medical conditions in school is developed and implemented. They should ensure that pupils with medical conditions are supported to enable the fullest participation possible in all aspects of school life. The governing body will ensure that sufficient staff have received suitable training and are competent before they take on responsibility to support children with medical conditions. They should also ensure that any members of school staff who provide support to pupils with medical conditions are able to access information and other teaching support materials as needed.

The Headteacher is responsible for:

Ensuring that the school's policy is developed and effectively implemented with partners. This includes ensuring that all staff are aware of the policy for supporting pupils with medical conditions and understand their role in its implementation. Headteachers should ensure that all staff who need to know are aware of the child's condition. They should also ensure that sufficient trained numbers of staff are available to implement the policy and deliver against all individual healthcare plans, including in contingency and emergency situations. This may involve recruiting a member of staff for this purpose. Headteachers have overall responsibility for the development of individual healthcare plans. They should also make sure that school staff are appropriately insured and are aware that they are insured to support pupils in this way. They should contact the school nursing service in the case of any child who has a medical condition that may require support at school, but who has not yet been brought to the attention of the school nurse.

The Business Manager is responsible for:

Implementing the school's policy and ensuring that information is communicated to school staff in a timely manner. Providing support to pupils with medical conditions, including the administering of medicines. The Business Manager is responsible for arranging & recording staff training. The Business Manager will initiate meetings for the development and review of Individual Health Care Plans and for capturing information on pupils' medical needs through use of the questionnaire when or before they join the school.

The Home School Link Worker (where in post) is responsible for:

Liaising with Parents/Carers and the School Nurses where appropriate. When there is no Home School Link Worker in post, this role will be fulfilled by office staff.

Teachers and Support Staff are responsible for:

Providing support to pupils with medical conditions, including the administering of medicines, although they cannot be required to do so. Although administering medicines is not part of teachers' professional duties, they should take into account the needs of pupils with medical conditions that they teach. School staff should receive sufficient and suitable training and achieve the necessary level of competency before they take on responsibility to support children with medical conditions. Any member of school staff should know what to do and respond accordingly when they become aware that a pupil with a medical condition needs help.

The School Link Nurse/Matron is responsible for:

Notifying the school when a child has been identified as having a medical condition which will require support in school. Wherever possible, they should do this before the child starts at the school. They would not usually have an extensive role in ensuring that schools are taking appropriate steps to support children with medical conditions, but may support staff on implementing a child's individual healthcare plan and provide advice and liaison, for example on training. School nurses can liaise with lead clinicians locally on appropriate support for the child and associated staff training needs - for example, there are good models of local specialist nursing teams offering training to local school staff, hosted by a local school. Community nursing teams will also be a valuable potential resource for a school seeking advice and support in relation to children with a medical condition.

Local Arrangements

Identifying children with health conditions

Statutory Requirement: The Governing body will ensure that the policy sets out the procedures to be followed whenever a school is notified that a pupil has a medical condition.

We will aim to identify children with medical needs on entry to the school by working in partnership with parents/ carers and following the process outlined in the document 'Process for identifying children with a health condition' (Appendix F) produced by the Southern Health School Nursing Team in conjunction with the Children's Services Health and Safety Team. We will use the 'Health Questionnaire for Schools' to obtain the information required for each child's

medical needs to ensure that we have appropriate arrangements in place prior to the child commencing at the school to support them accordingly. Where a parent or health professional informs the school that a child is newly diagnosed with a medical condition or their needs have changed, a meeting will be initiated to put an Individual Health Care Plan in place.

Where a formal diagnosis is awaited or is unclear, we will plan to implement arrangements to support the child, based on the current evidence available for their condition. We will ensure that every effort is made to involve some formal medical evidence and consultation with the parents.

Individual health care plans

Statutory Requirement: The Governing body will ensure that the school's policy covers the role of individual healthcare plans, and who is responsible for their development in supporting children at school with medical conditions.

We recognise that Individual Healthcare Plans are recommended in particular where conditions fluctuate or where there is a high risk that emergency intervention will be needed, and are likely to be helpful in the majority of other cases, especially where medical conditions are long term and complex. However, not all children will require one. The school, healthcare professional and parent will agree based on evidence when a healthcare plan would be inappropriate or disproportionate.

Where children require an individual healthcare plan it will be the responsibility of the Business Manager and Class teacher to work with parents and relevant healthcare professionals to write the plan.

A healthcare plan (and its review) may be initiated in consultation with the parent/carer, by a member of school staff or by a healthcare professional involved in providing care to the child. The Business Manager will work in partnership with the parents/carer, and a relevant healthcare professional eg. school, specialist or children's community nurse, who can best advise on the particular needs of the child to draw up and/or review the plan. Where a child has a special educational need identified in a statement or Educational Health Care (EHC) plan, the individual healthcare plan will be linked to or become part of that statement or EHC plan.

We may also refer to the flowchart contained within the document 'Process for identifying children with a health condition' for identifying and agreeing the support a child needs and then developing the individual healthcare plan.

We will use the individual healthcare plan template produced by the DfE to record the plan.

If a child is returning following a period of hospital education or alternative provision (including home tuition), we will work with Hampshire County Council and education provider to ensure that the individual healthcare plan identifies the support the child will need to reintegrate effectively.

Statutory Requirement: The governing body should ensure that all plans are reviewed at least annually or earlier if evidence is presented that the child's needs have changed. Plans should be developed with the child's best interests in mind and ensure that the school assesses and manages the risks to the child's education, health and social well-being and minimise disruption. (see IHP template – Appendix A)

The Business Manager will diarise the IHP review dates to ensure that all IHCPs held by the school are reviewed at least annually.

Statutory Requirement: When deciding what information should be recorded on individual healthcare plans, the governing body should consider the following:

- The information required by the IHP template
- Absence management
- Level of support needed
- Confidentiality

Staff training

Statutory Requirement: The Governing Body should ensure that this policy clearly sets out how staff will be supported in carrying out their role to support children with medical conditions, and how this will be reviewed. It should specify how training needs will be assessed and by whom training will be commissioned and provided.

The school policy should be clear that any member of school staff providing support to a child with medical needs should have received suitable training.

Staff must not administer prescription medicines or undertake any health care procedures without the appropriate training (updated to reflect any individual healthcare plans)

All new staff will be inducted on the policy when they join the school through the New Staff Induction Form. Records of this training will be stored in the school office/within personnel files.

All nominated staff will be provided with awareness training on the school's policy for supporting children with medical conditions which will include what their role is in implementing the policy. This training will be carried out annually or after an IHP is reviewed.

The awareness training will be provided to staff by communication of a pupil's IHP or by face-to-face training by the School Nurse.

We will retain evidence that staff have been provided the relevant awareness training on the policy by retaining signature sheets, recording the date and details of the training provided.

Where required we will work with the relevant healthcare professionals to identify and agree the type and level of training required and identify where the training can be obtained from. This will include ensuring that the training is sufficient to ensure staff are competent and confident in their ability to support children with medical conditions. The training will include preventative and emergency measures so that staff can recognise and act quickly when a problem occurs and therefore allow them to fulfil the requirements set out in the individual healthcare plan.

Any training undertaken will form part of the overall training plan for the school and refresher awareness training will be scheduled at appropriate intervals agreed with the relevant healthcare professional delivering the training.

A 'Staff training record– administration of medicines' form will be completed to document the type of awareness training undertaken, the date of training and the competent professional providing the training.

The child's role

Statutory Requirement: The Governing body will ensure that the school's policy covers arrangements for children who are competent to manage their own health needs and medicines.

Where possible and in discussion with parents, children that are competent will be encouraged to take responsibility for managing their own medicines and procedures. This will be recorded in their individual healthcare plan. The healthcare plan will reference what will happen should a child who self-administers refuse to take their medication (this will normally be informing the parent/carer at the earliest opportunity).

Where possible we will endeavour to ensure that children can carry their own medicines and relevant devices or have easy access to allow for quick self medication. We will agree with relevant healthcare professionals/parent the appropriate level of supervision required and document this in their healthcare plan.

Managing medicines on School Premises

Statutory Requirement: The Governing Body will ensure that the school's policy is clear about the procedures to be followed for managing medicines.

The administration of medicines is the overall responsibility of the parents/carers. Where clinically possible we will encourage parents to ask for medicines to be prescribed in dose frequencies which enable them to be taken outside of school hours. However, the Business Manager is responsible for ensuring children are supported with their medical needs whilst on site, therefore this may include managing medicines where it would be detrimental to a child's health or school attendance not to do so.

We will not give prescription or non-prescription medicines to a child under 16 without their parents/carers written consent (a 'parental agreement for setting to administer medicines' form will be used to record this – Appendix C), except in exceptional circumstances where the medicine has been prescribed to the child without the knowledge of the parents. In such cases, we will make every effort to encourage the child or young person to involve their parents while respecting their right to confidentiality.

A documented tracking system to record all medicines received in and out of the premises will be put in place. The tracking system used is The Children's Services Medication Tracking Form. (Appendix B.)

The name of the child, dose, expiry and shelf life dates will be checked before medicines are administered.

On occasions where a child refuses to take their medication the parents will be informed at the earliest available opportunity.

We will only accept prescribed medicines that are in date, labelled, provided in the original container as dispensed by the pharmacist and include instructions for administration, their dosage and storage. (The only exception to this is where alternative arrangements are detailed in the pupils' IHP and agreed with parents). Insulin, which must still be in date, will generally be available to schools inside an insulin pen or a pump, rather than its original container.

Children who are able to use their own inhalers themselves are encouraged to carry it with them. If the child is too young or immature to take personal responsibility for their inhaler, staff should make sure that it is stored in a safe but readily accessible place, and clearly marked with the child's name.

Controlled drugs will be securely stored in a non-portable container which only named staff will have access to. We will ensure that the drugs are easily accessible in an emergency situation. A record will be kept of any doses used and the amount of the controlled drug held in school. There may be instances where it is deemed appropriate for a child to administer their own controlled medication. This would normally be at the advice of a medical practitioner. Where an individual child is competent to do so and following a risk assessment, we may allow them to have prescribed controlled drugs on them with monitoring arrangements in place.

We will only administer non-prescribed medicines on request from the parent if they are in clearly identifiable packaging and only on a short term basis (Where the school have concerns they will seek further guidance from their link School Nurse).

We will never administer aspirin to any child under 16 years old unless prescribed by a doctor.

All other pain relief medicine will not be administered without first checking maximum dosages and when previously taken. We will always inform parents.

Any homeopathic remedies to be administered will require a letter of consent from the child's doctor and will be administered at the discretion of the Head teacher.

Emergency medicines will be stored in a safe location but not locked away to ensure they are easily accessible in the case of an emergency. Types of emergency medicines include:

- Injections of adrenaline for acute allergic reactions
- Inhalers for asthmatics
- Injections of Glucagon for diabetic hypoglycaemia

Other emergency medication ie. Rectal diazepam or Buccal Midazolam for major seizures will be stored in accordance with the normal prescribed medicines procedures (see storage section).

Sanitary products will be stored in the medical room and given to pupils, who have started or are on their periods, when required. Staff will liaise with parents/carers where necessary if a pupil starts their period whilst at School. This will be treated with in a discrete manner and with reassurance.

Storage

All medication other than emergency medication will be stored safely in a locked cabinet, where the hinges cannot be easily tampered with and cannot be easily removed from the premise.

Where medicines need to be refrigerated, they will be stored in the office refrigerator in a clearly labelled airtight container. Children may not have access to the office at any time.

Children will be made aware of where their medicines are at all times and be able to access them immediately where appropriate. Where relevant they should know who holds the key to the storage facility.

Medicines such as asthma inhalers, blood glucose testing meters and adrenaline pens will always be readily available to children and not locked away. We will also ensure that they are readily available when outside of the school premises or on school trips.

Storage of medication whilst off site will be maintained at steady temperature and secure. There will be appropriately trained staff present to administer day to day and emergency medication and copies of individual health care plans will be taken off site to ensure appropriate procedures are followed.

Disposal

It is the responsibility of the parents/carers to dispose of their child's medicines. It is our policy to return any medicines that are no longer required including those where the date has expired to the parents/carers. Parents/carers will be informed of this when the initial agreements are made to administer medicines. Medication returned to parent/ carers will be documented on the tracking medication form.

Sharps boxes will be in place for the disposal of needles. Collection and disposal of these will be by the parent who will remove them from site.

Medical Accommodation

The Medical Room will be used for all medical administration/treatment purposes. The location/room will be made available when required.

Record keeping

Statutory Requirement: The governing body should ensure that written records are kept of all medicines administered to children.

A record of what has been administered including how much, when and by whom, will be recorded on a 'record of prescribed medicines' form. (Appendix D.) The form will be kept on file. Any possible side effects of the medication will also be noted and reported to the parent/carers.

Emergency Procedures

Statutory Requirement: The Governing body will ensure that the school's policy sets out what should happen in an emergency situation

Where a child has an individual healthcare plan, this will clearly define what constitutes an emergency and provide a process to follow. All relevant staff will be made aware of the emergency symptoms and procedures. We will ensure other children in the school know what to do in the event of an emergency ie. informing a teacher immediately if they are concerned about the health of another child.

Where a child is required to be taken to hospital, a member of staff will stay with the child until their parents arrives, this includes accompanying them to hospital by ambulance if necessary (taking any relevant medical information, care plans etc that the school holds).

To request an ambulance - dial 9-999, ask for an ambulance and be ready with the information below. Speak clearly and slowly and be ready to repeat information if asked.

1. your telephone number (01962 881410)
2. your name
3. your location as follows: Kings Worthy Primary School, Church Lane, Kings Worthy, SO23 7QS
4. provide the exact location of the patient within the school setting
5. provide the name of the child and a brief description of their symptoms
6. inform Ambulance Control of the best entrance to use and state that the crew will be met and taken to the patient
7. put a completed copy of this form by the phone

Statutory Requirement: *The Governing body should ensure that their arrangements are clear and unambiguous about the need to support actively pupils with medical conditions to participate in school trips and visits, or in sporting activities, and not prevent them from doing so.*

We will ensure that teachers are aware of how a child's medical condition will impact on their participation in any off site activity or day trip, but we will ensure that there is enough flexibility for all children to participate according to their own abilities within reasonable adjustments. We will consider what reasonable adjustments we might make to enable children with medical needs to participate fully and safely on visits. We will carry out a risk assessment so that planning arrangements take account of any steps needed to ensure that pupils with medical conditions are included. We will consult with parents and pupils and advice from the relevant healthcare professional to ensure that pupils can participate safely.

Unacceptable practice

Statutory Requirement: The governing body will ensure that the school's policy is explicit about what practice is not acceptable

Staff are expected to use their discretion and judge each child's individual healthcare plan on its merits, it is not generally acceptable practice to:

- prevent children from easily accessing their inhalers and medication and administering their medication when and where necessary;
- assume that every child with the same condition requires the same treatment;
- ignore the views of the child or their parents; or ignore medical evidence or opinion (although this may be challenged);
- send children with medical conditions home frequently or prevent them from staying for normal school activities, including lunch, unless this is specified in their individual healthcare plans;
- if the child becomes ill, send them to the school office or medical room unaccompanied or with someone unsuitable;
- penalise children for their attendance record if their absences are related to their medical condition, eg. hospital appointments;
- prevent pupils from drinking, eating or taking toilet or other breaks whenever they need to in order to manage their medical condition effectively;
- require parents, or otherwise make them feel obliged, to attend school to administer medication or provide medical support to their child, including with toileting issues. No parent should have to give up working because the school is failing to support their child's medical needs; or
- prevent children from participating, or create unnecessary barriers to children participating in any aspect of school life, including school trips eg. by requiring parents to accompany the child.

Liability and Indemnity

Statutory Requirement: The governing body will ensure that the appropriate level of insurance is in place and appropriately reflects the level of risk

Staff at the school are indemnified under the County Council self insurance arrangements.

The County Council is self insured and have extended this self insurance to indemnify school staff who have agreed to administer medication or undertake a medical procedure to children. To meet the requirements of the indemnification, we will ensure that staff at the school have parents' permission for administering medicines and members of staff will have had training on the administration of the medication or medical procedure.

Complaints

Statutory Requirement: The governing body will ensure that the school's policy sets out how complaints may be made and will be handled concerning the support provided to pupils with medical conditions

Should parents or children be dissatisfied with the support provided they can discuss their concerns directly with the Headteacher. If for whatever reason this does not resolve the issue, they may make a formal complaint via the school's complaints procedure.

Signature of Responsible Manager/Headteacher:	
Date:	

Appendix A

Individual Health Care Plan

Name of school	Kings Worthy Primary School
Child's name	
Group/class/form	
Date of birth	
Child's address	
Medical diagnosis or condition	
Date	
Review date	
Family Contact Information	
Name	
Phone no. (work)	
(home)	
(mobile)	
Name	
Relationship to child	
Phone no. (work)	
(home)	
(mobile)	
Clinic/Hospital Contact	
Name	
Phone no.	
G.P.	
Name	
Phone no.	
Who is responsible for providing support in school	

Describe medical needs and give details of child's symptoms, triggers, signs, treatments, facilities, equipment or devices, environmental issues etc

Name of medication, dose, method of administration, when to be taken, side effects, contra-indications, administered by/self-administered with/without supervision

Daily care requirements

Specific support for the pupil's educational, social and emotional needs

Arrangements for school visits/trips etc

Other information

Describe what constitutes an emergency, and the action to take if this occurs

Who is responsible in an emergency (*state if different for off-site activities*)

Plan developed with

Staff training needed/undertaken – who, what, when

Form copied to

Appendix B



MEDICATION TRACKING FORM

NAME OF PUPIL	CLASS	MEDICATION	MEDICATION EXPIRY DATE	DATE RECEIVED IN SCHOOL	DATE RETURNED TO PARENT/OR MEDICATION FINISHED	Permission form Completed by parent Y / N	STAFF NAME	SIGNATURE

Page intentionally blank

Appendix C Parental agreement for school to administer medicine

The school will not give your child medicine unless you complete and sign this form, and the school has a policy that the staff can administer medicine.

Date for review to be initiated by	
Name of school	Kings Worthy Primary School
Name of child	
Date of birth	
Class	
Medical condition or illness	
Name/type of medicine <i>(as described on the container)</i>	
Expiry date	
Dosage and method	
Timing	
Special precautions/other instructions	
Are there any side effects that the school needs to know about?	
Self-administration – y/n	
Procedures to take in an emergency	

NB: Medicines must be in original container as dispensed by the pharmacy Contact

Details

Name	
Daytime telephone no & Email	
Relationship to child	
Address	
I understand that I must deliver the medicine personally to	A member of the school office staff

The above information is, to the best of my knowledge, accurate at the time of writing and I give consent to school staff administering medicine in accordance with the school policy. I will inform the school immediately, in writing, if there is any change in dosage or frequency of the medication or if the medicine is stopped.

Signature(s) _____

Date _____ 19

Appendix D: Record of medicine administered to an individual child

Name of school	Kings Worthy Primary School
Name of child	
Date medicine provided by parent	
Group/class/form	
Quantity received	
Name and strength of medicine	
Expiry date	
Quantity returned	
Dose and frequency of medicine	

Staff signature _____

Signature of parent _____

Date			
Time given			
Dose given			
Name of member of staff			
Staff initials			
Date			
Time given			
Dose given			
Name of member of staff			
Staff initials			

Appendix E

Please complete the questionnaire below and return it to school

It is important that all children with medical conditions are supported to make sure that they are able to access their education. Some children with medical conditions may need care or medication to manage their health condition and to keep them well during the school day. Could you please complete the questionnaire below and return it to school as soon as possible so that we are able to assess your child's health needs and make arrangements to support them if necessary. In order to ensure that any medical needs are appropriately met in school we may need to discuss your child's health with the School Nursing service or another health professional who is involved in your child's care.

Name of child Date of Birth

Home Address.....

Does your child have a medical condition/ health concern?

YES NO

If YES please give details

Does your child have a medical condition/health concern that needs to be managed during the school day? YES

If YES NO please give details

Does your child take medication during the school day?

YES NO

If YES please give details

Does your child have a health care plan that should be followed in a medical emergency? YES

If YES NO please give details

The above information is, to the best of my knowledge, accurate at the time of writing and I give consent to the school to discuss this information with the School Nursing service or other health professionals who are involved in my child's care.

Signature(s) _____ Print Name _____

[Parent/ Carer with parental responsibility]

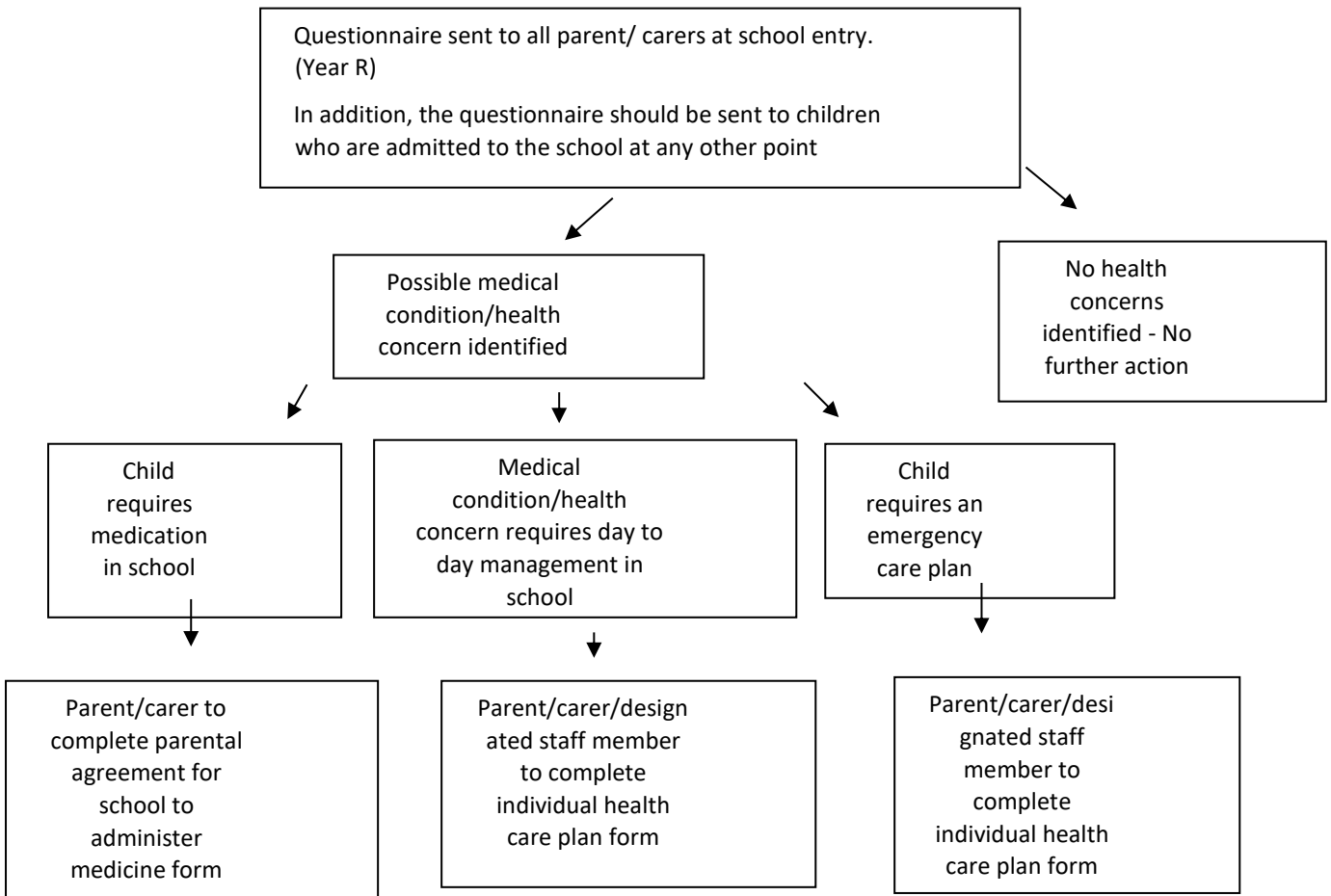
Date

Contact number _____

Appendix F

Suggested process for identifying children or young people with a medical condition that may require support in school

Not all children with a health condition will require a health care plan in school however the form will help schools to ascertain which children require support. In addition to this schools may be informed at any other point by a parent or health professional if a child is newly diagnosed with a health condition.



Please see sample flowchart below from the Supporting pupils with medical conditions guidance

